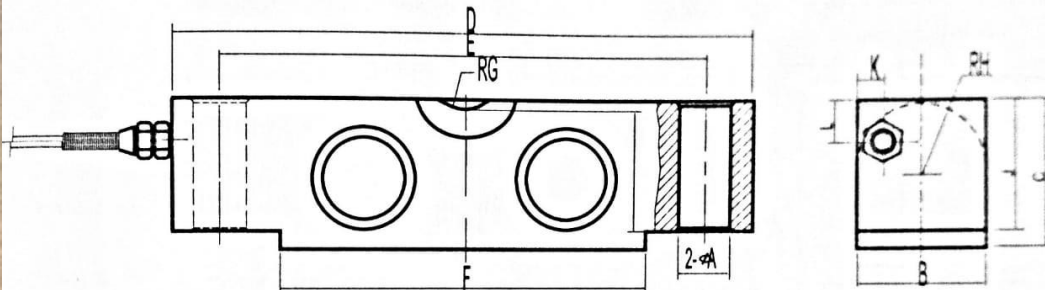




CARACTERÍSTICAS CELDA DE CARGA

| | |
|--|------------------|
| Capacidad (kLb) | 75 |
| Divisiones (d) | 3000 |
| Intervalo de verificación (% Capacidad nominal) | 0.01 |
| Salida (mV / V) | $3.0 \pm 0.1 \%$ |
| Error combinado (% Salida nominal) | 0.015 |
| Efecto temp. Sensibilidad (% Salida nominal / °C) | 0.0012 |
| Efecto temp. en cero (% Salida nominal / °C) | 0.0008 |
| Balance cero (% Salida nominal) | 1.0 |
| Resistencia de entrada (Ω) | 775 ± 10 |
| Resistencia de salida (Ω) | 702 ± 2 |
| Resistencia de aislamiento (M Ω) | ≥ 5000 |
| Sobrecarga de seguridad (% Cap. Max.) | 150 % |
| Rango de temp. operación (°C) | -20~ +70 |
| Excitación recomendada (Vdc ó Vac) | 5~ 18 |
| Excitación máxima (Vdc ó Vac) | 24 |
| Material | Acero Niquelado |
| Clase protección | IP68 |

Dimensiones



| CAP./SIZE klb | A | B | C | D | E | F | G | H | I | J | K | L |
|------------------|------|------|------|-------|-------|-------|------|------|------|------|------|------|
| 10~25 | 17.3 | 42.9 | 49.3 | 196.9 | 165.1 | 125.1 | 19.1 | 22.9 | 41.4 | 43.2 | 8.8 | 13.6 |
| 40 | 20.6 | 49.3 | 62.0 | 260.4 | 215.9 | 162.4 | 25.4 | 28.5 | 50.8 | 53.3 | 9.0 | 31.0 |
| 50~75 | 27.0 | 60.2 | 74.7 | 260.4 | 215.9 | 162.4 | 25.4 | 34.8 | 64.5 | 67.3 | 10.4 | 37.4 |

Diagrama

Electrical Termination

4 Cores cable standard lengths:

<=50klb:12m,>=75klb:16m

Cable Diameter:Φ6

Connection:

Refer to the following drawing:

